

BOUNDARY DESCRIPTION

Beginning at a point North 107.68 feet and West 353.07 feet from the South Quarter corner of Section 24, Township 5 South, Range 1 West, Salt Lake Base and Meridian,

thence North 87°55'48" West 372.24 feet;

thence North 68°11'55" West 211.14 feet;

thence North 44°15'10" West 403.93 feet;

thence North 27°14'51" West 448.95 feet;

thence North 01°06'45" East 461.11 feet;

thence North 43°04'04" East 136.30 feet;

thence North 54°44'31" East 62.21 feet;

thence North 02°43'26" East 1043.43 feet;

thence South 84°22'33" East 103.76 feet;

thence South 47°34'49" East 54.85 feet;

thence North 76°53'32" East 168.04 feet;

thence South 84°22'34" East 1492.30 feet to the west line of Eagle Top Subdivision;

thence South 00°41'20" West 856.85 feet along the west line of said Eagle Top Subdivision;

thence South 50°58'43" West 158.01 feet;

thence South 40°28'51" West 61.56 feet;

thence South 38°42'01" West 53.00 feet;

thence South 20°44'32" West 11.46 feet to a point on a curve;

thence westerly 108.00 feet along the 280.00 foot radius curve to the left with a central angle of 22°06'02" (chord bears North 81°23'14" West 107.34 feet);

thence South 87°33'45" West 113.82 feet to a point of curvature;

thence westerly 113.89 feet along the 220.00 foot radius curve to the right with a central angle of 29°34'41" (chord bears North 77°36'25" West 112.62 feet);

thence North 62°46'34" West 128.92 feet to a point of curvature;

thence northerly 23.56 feet along the 15.00 foot radius curve to the right with a central angle of 90°00'00" (chord bears North 17°46'24" West 21.21 feet);

thence North 62°46'34" West 50.00 feet to a point on a curve;

thence westerly 23.56 feet along the 15.00 foot radius curve to the right with a central angle of 90°00'00" (chord bears South 72°13'26" West 21.21 feet);

thence North 62°46'34" West 128.92 feet;

thence South 27°13'26" West 60.00 feet;

thence South 62°46'34" East 53.07 feet;

thence South 27°13'26" West 200.00 feet;

thence North 62°46'34" West 6.15 feet;

thence South 27°13'26" West 250.00 feet;

thence South 62°46'34" East 27.01 feet;

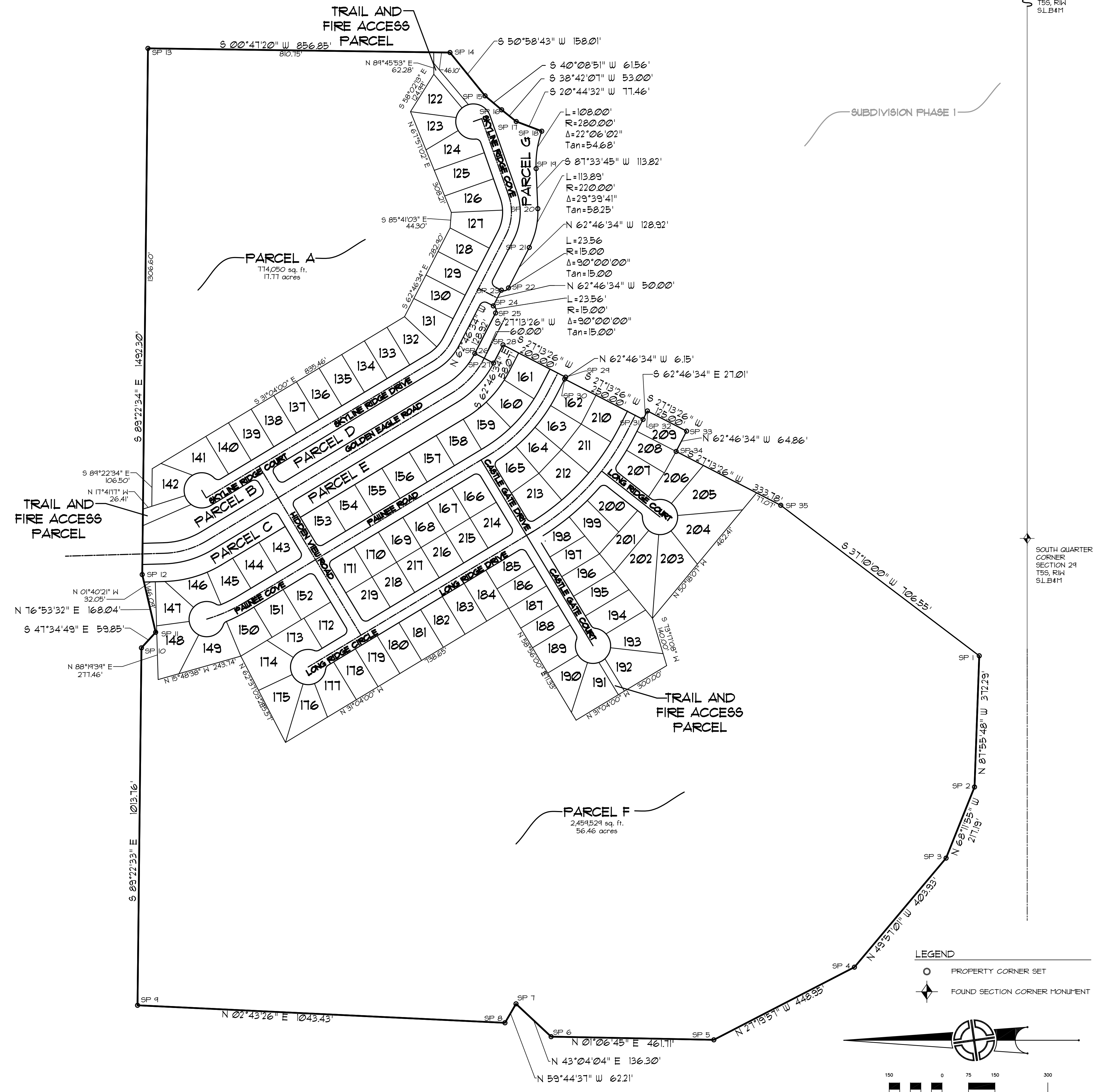
thence South 27°13'26" West 125.00 feet;

thence North 62°46'34" West 64.86 feet;

thence South 27°13'26" West 333.78 feet;

thence South 37°10'00" West 106.55 feet to the point of beginning.

Contains 4,712,372 sq. ft. OR 108.18 acres.

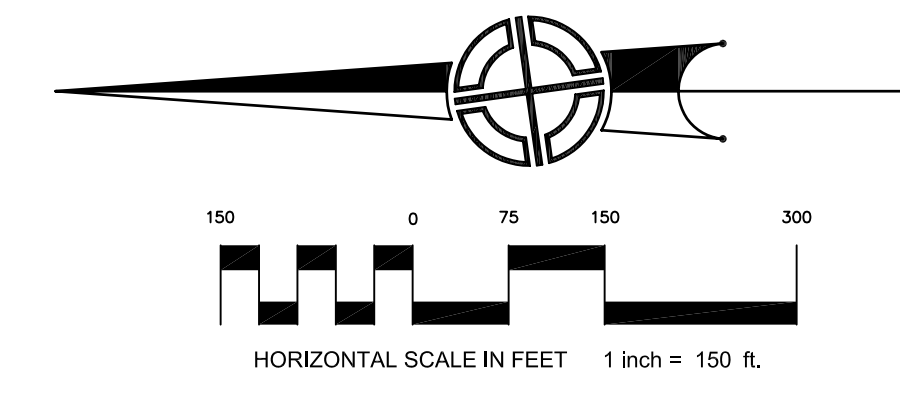


STATE PLANE COORDINATES

SP NUMBER	NORTHING	EASTING
SP 1	1245781.813	1508046.561
SP 2	1245801.241	1507614.623
SP 3	1245881.881	1507473.024
SP 4	1246141.101	1507163.906
SP 5	1246540.413	1506951.820
SP 6	1247001.900	1506466.110
SP 7	1247101.450	1507054.818
SP 8	1247132.181	1507006.294
SP 9	1248174.133	1507055.641
SP 10	1248163.718	1508064.045
SP 11	1248123.358	150813.216
SP 12	1248161.460	1508276.829
SP 13	1248145.254	1509168.599
SP 14	1247288.134	1509156.825
SP 15	1247189.274	1509634.108
SP 16	1247142.236	1509594.429
SP 17	1247100.885	1509561.301
SP 18	1247028.470	1509533.878
SP 19	1247044.537	1509421.784
SP 20	1247039.695	1509314.101
SP 21	1247063.856	1509204.134
SP 22	1247122.813	1509084.525
SP 23	1247143.008	1509083.081
SP 24	1247165.873	1509038.602
SP 25	1247159.398	1509018.407
SP 26	12471218.356	1508903.799
SP 27	1247165.017	1508816.360
SP 28	1247138.459	1508927.987
SP 29	1246960.664	1508836.525
SP 30	1246963.471	1508831.055
SP 31	1246741.233	1508716.727
SP 32	1246728.881	1508740.739
SP 33	1246611.759	1508683.575
SP 34	1246647.420	1508625.916
SP 35	1246350.698	1508473.275

LEGEND

- PROPERTY CORNER SET
- ◆ FOUND SECTION CORNER MONUMENT



SKYLINE RIDGE SUBDIVISION PHASE 2

LOCATED IN THE SOUTH HALF OF SECTION 24
TOWNSHIP 5 SOUTH, RANGE 1 WEST,
SALT LAKE BASE & MERIDIAN
CITY OF EAGLE MOUNTAIN, UTAH COUNTY, UTAH

SURVEYOR'S SEAL NOTARY PUBLIC SEAL CITY-COUNTY ENGINEER SEAL CLERK-RECORDER SEAL