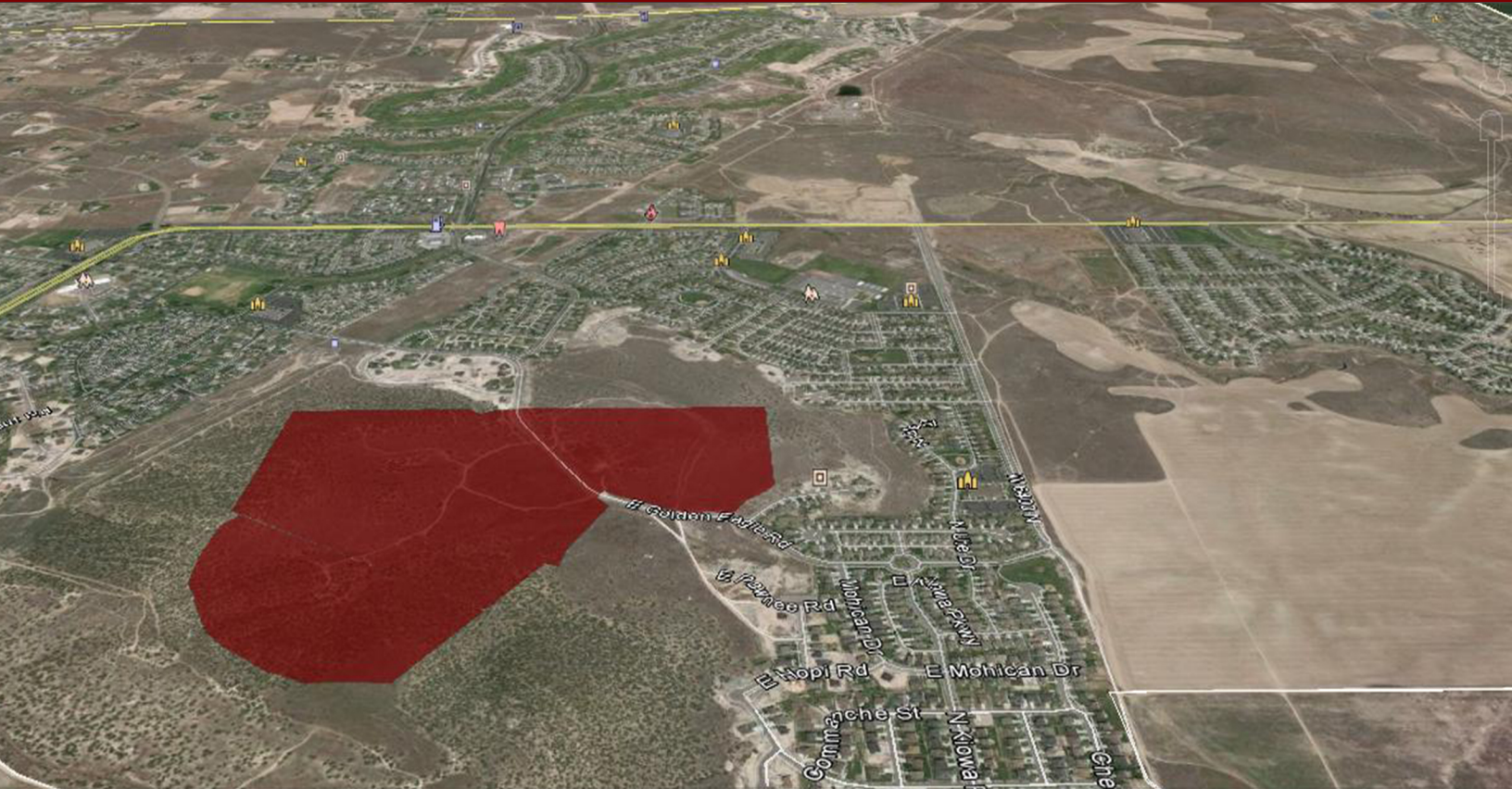


RESIDENTIAL LAND FOR SALE

Skyline Ridge Estates, Eagle Mountain



Skyline Ridge Estates Phase 2 is comprised of 108.18 acres, the property consists of 98 proposed lots with the possibility of replatting for additional lots. The property is located within The Ranches, a master planned community in Eagle Mountain, Utah.

FOR MORE INFORMATION CALL 801.871.5946.



UTAH
LAND
GROUP

BROOKE GLAITTLI

www.UtahLandGroup.com | 801.871.5946